

Adur NHW Newsletter



Shoreham & Southwick Issue

May 2024

Correspondence: C/O Lancing Parish Hall,
96-98 South Street Lancing BN15 8DA
Email : adurnhw@gmail.com

Your Committee Members:

David Hansford Chairman Tel: 01903 753754
Doris & Steve Martin Tel: 01903 523817
Robin Monk Tel: 01903 751261
John Nutt Tel: 07544 570734

At Recycling Centres you can recycle:

- Electrical items
- Textiles
- Batteries
- Books, DVDs and CDs

and more...

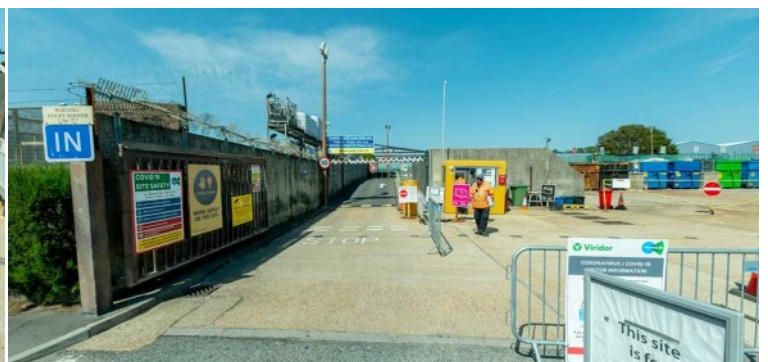


If you are visiting a Recycling Centre (RC) please be aware that:

- All centres require you to book an appointment
- You will need proof of residency
- All RCs operate an automatic number plate recognition (ANPR) system and closed-circuit television (CCTV) cameras.

Your vehicle registration number plate will be recorded by ANPR and CCTV when you visit any RC in West Sussex. Your data will only be used by West Sussex County Council (WSCC) for the purposes of monitoring centre usage.

Summer opening hours (1 April - 30 September) Every Day 9.00am to 6.00pm



Action Fraud

The national fraud and cybercrime reporting service has launched a ticket fraud awareness campaign, warning people to be alert to fraudsters trying to catch out people planning for popular and sold-out events. Last year more than 8,700 people reported they had been a victim of ticket fraud, with a total of £6.7 million lost. This works out to an average loss of £772 per victim.

Remember that it's easy for scammers to set up a fake website that looks genuine. Some even use a name or webpage URL that is similar to that of a bona fide website.

Action Fraud offers the following advice on how to protect yourself against credit fraud:

- Only buy tickets from the venue's box office, the promoter, an official agent or a well-known and reputable ticket exchange site.
- Avoid paying for tickets by bank transfer, especially if buying from someone unknown. Credit card or payment services such as PayPal give you a better chance of recovering the money if you become a victim of fraud.
- The password you use for your email account, as well as any other accounts you use to purchase tickets, should be different from all your other passwords. Use three random words to create a strong and memorable password, and enable 2-step verification (2SV).
- Be wary of unsolicited emails, texts or adverts offering extraordinarily good deals on tickets. Is the vendor a member of the Society of Ticket Agents and Retailers (STAR)? If they are, the company has signed up to their strict governing standards. STAR also offers an approved Alternative Dispute Resolution service to help customers with outstanding complaints. For more information visit star.org.uk/buy_safe.

If you feel at all suspicious, report the email to the Suspicious Email Reporting Service (SERS) at report@phishing.gov.uk. For more advice on how to stay secure online, please visit cyberaware.gov.uk.

If you believe yourself to have been a victim of fraud or cybercrime, report it at www.actionfraud.police.uk or by calling 0300 123 2040.

WhatsApp group chat members are being warned they could be targeted by criminals, as Action Fraud reveals it has received 636 reports from victims of the messaging app this year.

The fraud often begins when a member of the group receives a WhatsApp audio call from the fraudster, pretending or claiming to be another member of the group. This is done to gain the individual's trust and often the scammer will use a false profile picture and/or display name, so at first glance he or she would appear to be a genuine member of the group.

The fraudsters will tell the victims that they are sending them a one-time passcode which will allow them to join an upcoming video call for group members. The criminal then asks the victim to share this passcode with them so they can be "registered" for the video call.

In reality, the criminal is asking for a registration code to register victims' WhatsApp accounts to a new device so their accounts can be taken over.

Once fraudsters have achieved this, they will enable two-step verification which makes it impossible for victims to regain access to their account. Other members of the group, or friends and family in the victims' contacts, will then be messaged asking them to transfer money urgently as they are in desperate need of help.

Here's how to secure your WhatsApp account:

Set up two-step verification (2SV) to give an extra layer of protection to your account. Tap Settings > Account > Two-step verification > Enable.

CALL. If a family member or friend makes an unusual request on WhatsApp, always call the person outside of WhatsApp to confirm their identity.

Report spam messages or block a sender within WhatsApp. Press and hold on the message bubble, select Report and then follow the instructions.

Detective Superintendent Gary Miles, head of the National Fraud Intelligence Bureau at City of London Police, said: 'WhatsApp remains an integral mode of communication for many people across the UK, however fraudsters still find ways to infiltrate these platforms. Sadly, anyone can become a target for fraud.'



Partnership Engagement - Southwick Library

Monday 10th June 2024 - 10:00 Hrs to 11:30 Hrs

Monday 8th July 2024 - 10:00 Hrs to 11:30 Hrs



If you would like to talk to someone about your safety at home and in the community, as well as any concerns you may have about anti-social behaviour and crime in Adur & Worthing, the Safer Communities Partnership will be hosting a pop-up at Southwick library.

Tips to protect your Garden

After such a prolonged and bitter period of bad weather, those of us with gardens will be welcoming the opportunity to get to work in the sunshine. But opportunistic thieves will be on the alert for unsecured or poorly secured sheds, knowing that they are likely to contain tools that could be used to break into your home, or valuable plants and ornaments in your garden, so the Royal Horticultural Society and others have provided the following tips:

- Don't make a burglar's job easier by leaving gardening tools lying around!
- The value of garden tools and equipment in sheds and outbuildings is often considerable, so check your insurance policy to see what it will cover – sheds and contents are likely to be covered but not plants, containers, statues and other garden features.
- Proprietary land anchors such as Platipus Anchors are available to secure larger plants, garden furniture, containers and ornaments. Most are based on a permanent stake to which an item is chained or bolted.
- Large plantings of new shrubs can be secured by planting through chicken wire, then covering the area with soil or mulch, and movement detectors can be attached to expensive items such as garden antiques and statuary – sensors beneath the object set off an alarm when moved.
- Always mark your property with your postcode and house number. In most cases engraving will be the most suitable method.
- Make sure you have heavy duty locks on doors and secure the windows with appropriate locks. If you use a padlock, choose one with a shrouded shackle to prevent bolt cutters from gaining access. Hasp and staple locks should be made of hardened steel to prevent them from being easily cut or sawn.
- Think about using a strong lockable box or cage within the shed in which you can securely store garden tools and garden chemicals.
- Consider fitting an alarm system - various stand-alone systems are available based on a passive infra-red movement detector or a door contact system – or extending your current alarm system to cover your outbuildings and sheds.

Further information can be found at our web sites :

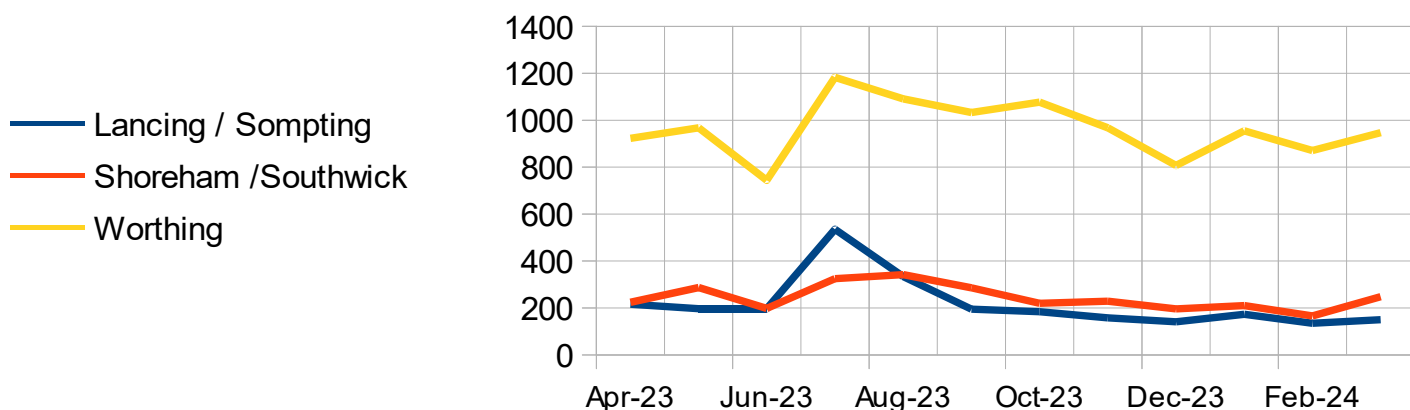
<https://worthingnhw.ourwatch.org.uk>

www.lancingnhw.org.uk

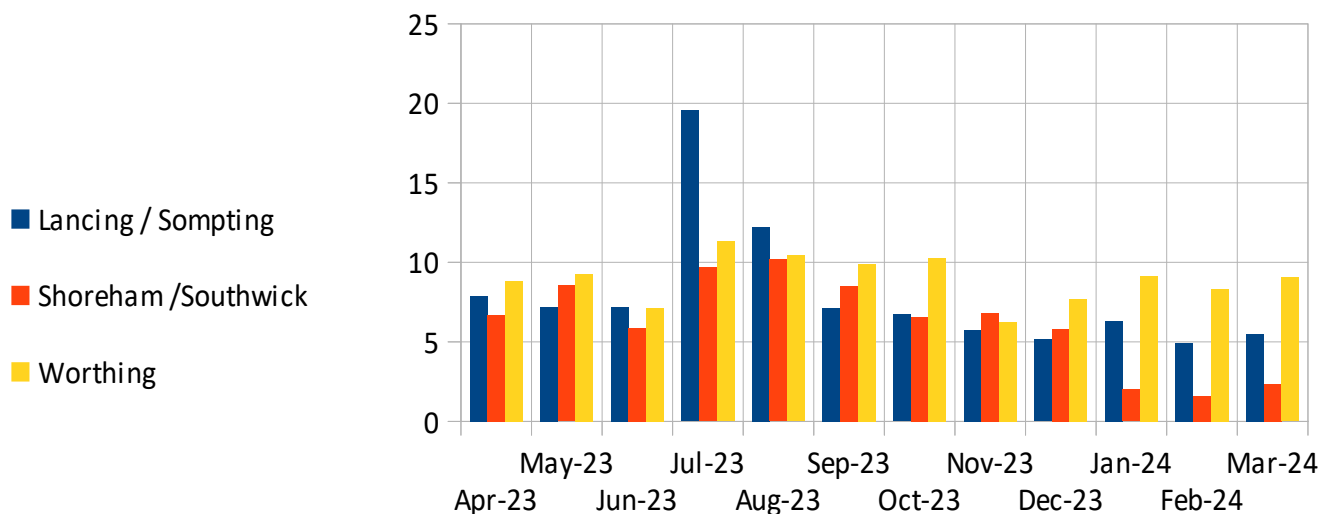
Crime Statistics for March 2024

March 2024	Buckingham	Eastbrook	Hillside	Marine 1	Southlands	Southwick	St Mary's	St Mary's	St	Sub Total
						Green	North	South	Nicholas	
Antisocial Behaviour	0	5	5	4	5	13	3	3	3	41
Bike Theft	0	0	0	2	0	0	0	1	0	3
Burglary	0	4	0	4	1	0	0	0	0	9
Criminal Damage	0	1	1	0	0	3	3	6	1	15
Drugs	0	2	0	0	2	0	2	0	0	6
Other Crime	0	0	1	0	2	1	0	1	1	6
Other Theft	0	2	1	0	0	0	3	2	0	8
Weapons	0	0	0	0	0	1	1	0	0	2
Public Order	0	1	1	0	3	6	3	3	0	17
Robbery	0	0	0	0	0	0	0	0	0	0
Theft Shop	0	0	3	0	12	6	3	26	0	50
Theft Person	0	0	2	0	0	0	0	1	0	3
Vehicle Crime	0	5	2	1	0	1	1	2	2	14
Violence & Sex Offences	0	4	8	11	8	16	14	10	3	74
Totals	0	24	24	22	33	47	33	55	10	248

Crimes April 2023 to March 2024



Crimes per 1000 of Population



See the latest Alerts at : [https:// worthingnhw.ourwatch.org.uk/](https://worthingnhw.ourwatch.org.uk/)