

Adur NHW Newsletter



Shoreham & Southwick Issue

October 2023

**Correspondence: C/O Lancing Parish Hall,
96-98 South Street Lancing BN15 8DA
Email : adurnhw@gmail.com**

Your Committee Members:

David Hansford Chairman	Tel: 01903 753754
Doris & Steve Martin	Tel: 01903 523817
Robin Monk	Tel: 01903 751261
John Nutt	Tel: 07544 570734

Recycling centres switch to autumn/winter opening hours

Recycling centres will be switching to autumn and winter opening hours from 1 October 2023.

With the days getting shorter and sites becoming quieter, the opening times for centres will be 9 am – PM until 31 March 2023. Some sites will also be closed for an additional day.

Across this period, recycling centres will be open on the following days

Shoreham-by-Sea: 9 am to 4 pm - Wednesday to Sunday

Worthing: 9 am to 4 pm - Monday to Wednesday and Friday to Sunday

These hours will remain in place until 31 March with all sites closed on Christmas Day, Boxing Day, and New Years Day. Please remember that you will need to book a slot to attend the following recycling centres:

Shoreham-by-Sea

Worthing

Same-day appointments are available through the county council Book to Recycle system, with some appointments available 14 days in advance if needed. There are a limited number of appointments per day and they are booked on a first come, first served basis. You can book a slot online at

www.westsussex.gov.uk/booktorecycle

Deborah Urquhart, Cabinet Member for Environment and Climate Change said: "Our Book to Recycle system significantly reduces waiting times, it takes less than a minute to book your slot and same-day bookings are available. Recycling all you can reduces waste, saves energy and helps tackle climate change. Recycling is a crucial component of the environmental strategy behind our Council Plan, and we encourage everyone to recycle as much of their waste as possible."

You can recycle almost anything at recycling centres, from hard plastics to textiles and books. For a handy A-Z and more information on how to book an appointment, go to: www.westsussex.gov.uk/recycling

www.lancingnhw.org.uk

Tyre Safety Month

October is Tyre Safety Month and TyreSafe (<https://www.tyresafe.org/>), the UK's leading authority on tyre safety, has highlighted the importance of maintaining correct tyre pressure and tread depth at all times.

Incorrect pressure affects the tyre's speed capability, load carrying capacity, handling response, wear rate and overall safety. Under-inflated tyres also use more fuel.

Poor handling and grip, unreliability and unpredictable vehicle behaviour are among the effects of incorrect tyre pressure. Low tyre pressure will increase the chances of tyres suffering catastrophic failure. Under-inflated tyres are not only dangerous but will also increase the running costs of your car. As well as using more fuel, your tyres will wear out more quickly.

Over-inflation will round out the middle of the tread pattern, and the tyre will have a reduced contact area with the road, causing it to wear out more quickly. Handling and braking will also be affected.

Tyresafe recommends that you check your tyre pressure every month or before every long journey. While your car is likely to have a Tyre Pressure Monitoring System (TPMS), you should always use an accurate pressure gauge to check the settings are correct. TPMS is designed to be a critical warning system, not a reminder to check the vehicle's tyres.

To check your tyre pressure manually, you should use a tyre pressure gauge or visit a petrol station to use the gauges there. You can find out the correct tyre pressure for your car in your vehicle manual, on a plaque in one of the front door sills or the inside of your fuel cap - or you can enter your registration number into Tyresafe's tyre pressure calculator to find the correct PSI for your car.

The legal minimum tread depth for cars in the UK is 1.6mm but you should not risk waiting to replace them until the last minute, as a significant amount of tread can be worn in just one emergency manoeuvre. It is advisable to have your tyre replaced once it reaches 2mm, but most experts recommend replacing tyres when they have a minimum of 3mm tread depth.

New partnership with SimpliSafe

Neighbourhood Watch and security provider SimpliSafe have this month announced a new partnership, which is set to bring many benefits for our members. These will include exclusive discounts on their smart home security products, and expert advice on burglary prevention and home security.

Protecting over 4 million people across the US and UK, SimpliSafe delivers advanced and affordable security solutions including sensors for every window, room and door, indoor and outdoor HD security cameras and hazard detectors to guard against fires, floods and burst pipes.

All of these are powered by 24/7 professional monitoring with no long-term contracts, and are suitable for both homeowners and renters alike. Additional components can be added to the system at any time, and can also be taken with you if you decide to move.

There is much to look forward to as a result of this exciting new partnership, including a large-scale hardware donation event for a local community in the new year. Additionally, SimpliSafe will also donate a number of home security systems each year to households who are disadvantaged and vulnerable members of the community. SimpliSafe home security systems start from less than £200, and Neighbourhood Watch members will soon receive their exclusive discount code from the Neighbourhood Watch team.

Jonathan Wall, UK General Manager of SimpliSafe, said:

"No home is exactly the same and there's nothing more important than keeping your family and home safe. With a range of advanced security products that can be tailored and the option of simple DIY or professional installation, Neighbourhood Watch members can continue to take control of their home's security.

John Haywards-Cripps, CEO of Neighbourhood Watch Network, said:

"SimpliSafe is a trusted brand that has committed to its mission of making Every Home Secure and offers a range of affordable security options for every type of home. We are delighted to build a new and exciting relationship with SimpliSafe as its first charity partner, to further our goal of empowering households to secure their homes and neighbourhoods and take an active step in preventing burglaries in local areas."

lithium-ion battery warning

Businesses are being urged to consider how they store and use lithium-ion batteries in the workplace to reduce fire safety risks.

The warning comes after a fire at Swan Walk in Horsham on Wednesday (4 October) which crews from Billingshurst, Crawley and Horsham responded to.

Upon arrival firefighters quickly got to work and extinguished the fire after finding smoke issuing from both the ground floor and first floor of the commercial premises. Fortunately, the premises had working smoke alarms fitted which alerted Joint Fire Control of the incident early on.

A fire investigation has concluded the most likely cause of the fire was lithium-ion batteries within a smart-phone.

Darren Wickings, Station Manager for Policy (Strategic Risk and Improvement), said: "Lithium-ion batteries are rechargeable batteries that are commonly found in household electrical items, such as mobile phones, laptops, vapes and e-bikes. The device you're reading this on probably uses lithium-ion batteries.

"Their popularity and extensive use have resulted in fire and rescue services across the nation attending more and more battery-related fires, and we're no different here in West Sussex.

"It's always concerning when new fire risks and trends emerge, but it's important to note that most of these fires are preventable. There are several safety measures that businesses can implement to protect their livelihood and prevent their work from becoming a victim of fire."

Tips for preventing lithium-ion battery fires at your workplace:

Keep batteries away from flammable materials.

Store batteries in an enclosed outdoor area, making sure temperatures are maintained and don't become very hot or cold.

Protect batteries from becoming damaged; do not use if they look physically damaged.

Safely dispose of old batteries at [your nearest recycling centre](#) as old batteries are more likely to start a fire.

Never charge or store batteries on your escape route.

Use the charger supplied with the device or recommended by the manufacturer.

Avoid leaving chargers unattended when in use and unplug at the mains when device is fully charged.

Small business owners can find out more about their legal duties for fire safety in the workplace by [using our interactive business fire safety awareness tool](#).



Partnership Engagement - Southwick Library

Monday 13th November - 10:00 Hrs to 11:30 Hrs

(may be subject to change nearer the date)



If you would like to talk to someone about your safety at home and in the community, as well as any concerns you may have about anti-social behaviour and crime in Adur & Worthing, the Safer Communities Partnership will be hosting a pop-up at Southwick library.

Shoreham & Southwick Burglaries & Vehicle Crime

Specific details of Burglaries & Vehicle crime are not available at this time.

Further information can be found at our web sites :

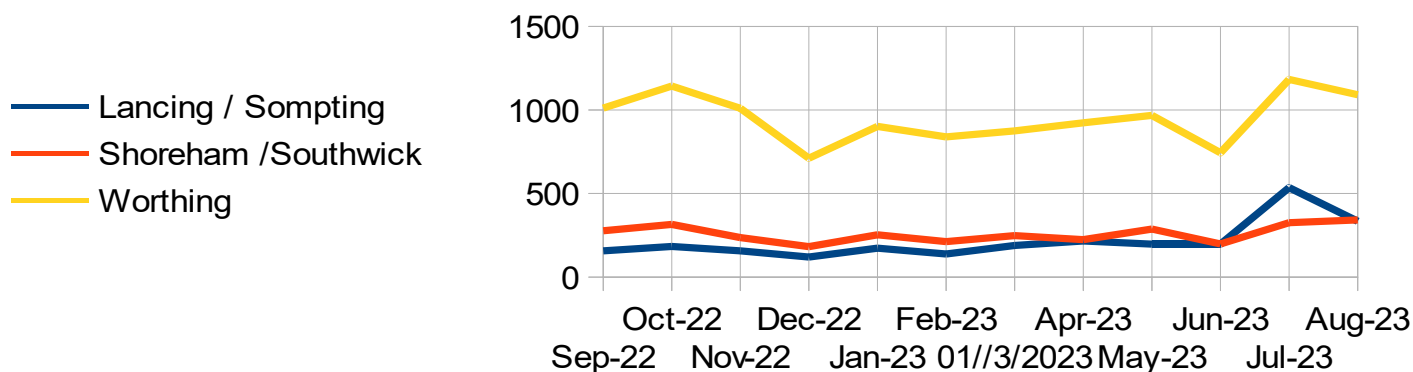
<https://worthingnhw.ourwatch.org.uk>

www.lancingnhw.org.uk

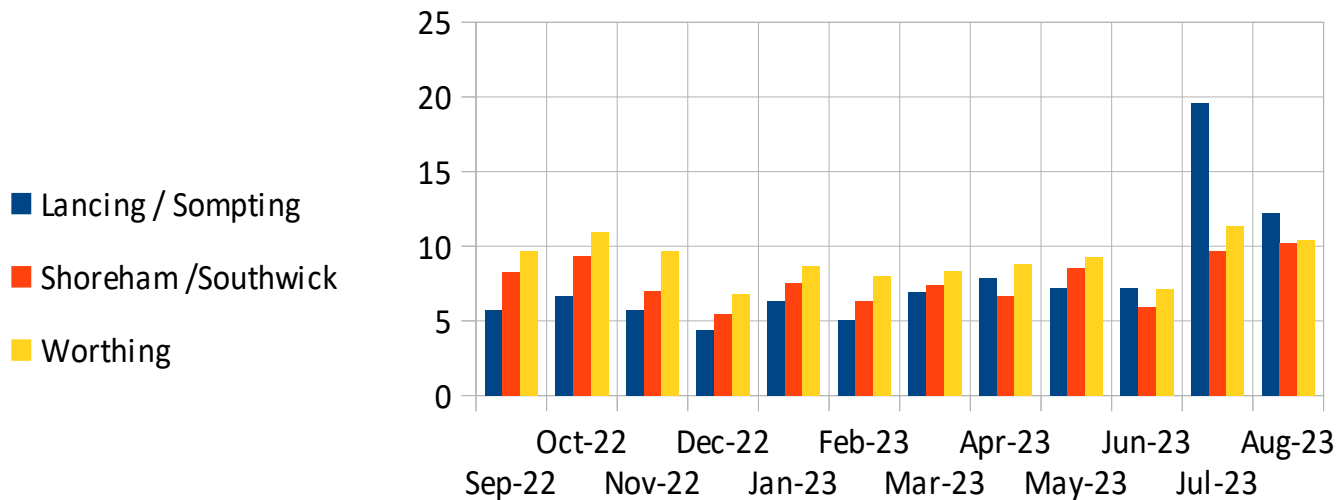
Crime Statistics for August 2023

August 2023	Buckingham	Eastbrook	Hillside	Marine 1	Southlands	Southwick	St Mary's	St Mary's	St	Sub Total
						Green	North	South	Nicholas	
Antisocial Behaviour	2	7	2	2	3	7	3	7	3	36
Bike Theft	1	0	1	0	0	0	0	1	0	3
Burglary	0	3	0	0	1	2	1	1	0	8
Criminal Damage	1	11	4	2	5	3	4	2	0	32
Drugs	0	1	0	0	0	0	0	3	0	4
Other Crime	0	1	0	0	0	0	0	0	0	1
Other Theft	1	3	4	1	1	2	3	2	1	18
Weapons	0	0	0	1	1	0	0	0	0	2
Public Order	0	6	3	2	1	2	1	4	2	21
Robbery	0	0	0	0	0	0	0	0	0	0
Theft Shop	0	0	2	0	17	26	1	71	0	117
Theft Person	0	0	0	0	0	0	0	0	0	0
Vehicle Crime	0	0	0	4	0	0	0	1	0	5
Violence & Sex Offences	4	22	8	9	6	19	4	18	5	95
Totals	9	54	24	21	35	61	17	110	11	342

Crimes September 2022 to August 2023



Crimes per 1000 of Population



See the latest Alerts at : [https:// worthingnhw.ourwatch.org.uk/](https://worthingnhw.ourwatch.org.uk/)